



Snake River Currents

April 2, 2020 - April 8, 2020



Commissary News

To help manage through the Covid-19 crisis and ensure all locations receive commissary weekly, we are moving to a modified commissary operations. Beginning April 13, all AICs are limited to 30 line selections, per order, per week. Special Housing will continue ordering every other week with current limits. If you order more than 30 line selections, commissary will stop processing the order after 30 selections are processed from your list. Please note that all spending limits will remain the same. These limits are located at the top of each commissary order form.

Front Page

- Commissary News
- Masks
- In Memoriam
- Weekly Movies
- Weather Forecast

Page 2

- Physical Plant Door Crew
- Physical Plant Plumber
- Nutrition Information
- Chapel A/V Library
- Religious Services

Envelopes, batteries, soda coupons and soup count as one item regardless of how many you order, everything else counts as one item each.

For example:

- If you purchase 30 envelopes, that counts as 1 item.
- If you purchase 15 soda coupons, that counts as 1 item.
- If you purchase 8 AAA batteries, that counts as 1 item.
- If you purchase 25 soups, that counts as 1 item.

- If you purchase 2 Tasters Choice coffee, that counts as 2 items.
- If you purchase 3 CA Nacho Chips, that counts as 3 items.
- If you purchase 2 Close Up toothpastes, that counts as 2 items.



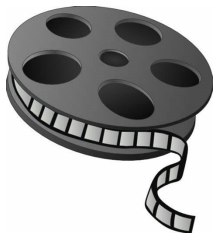
Masks

In the coming weeks, DOC will be offering each adult in custody two (2) utility masks made of 100% cotton. The mask is designed to reduce the number of droplets expelled from a person's cough or sneeze. These masks are for barrier and comfort – NOT for medical use. It is important to note these masks will NOT take the place of appropriate personal protective equipment (PPE) for those with, or in close contact with, COVID-19. Distribution of other PPE will be determined by Health Services in all locations.

Individuals will be responsible for cleaning their own masks. Thorough washing with soap and hot water and completely drying is sufficient for personal use of these masks.


In Memoriam

On March 8, 2020, Mr. Wynn Puckey passed away at age 27. Mr. Puckey had been a member of the SRCI community since 2019, most recently residing in Complex 2. Remembrances will take place in Religious Services. Please hold his family and loved ones in your thoughts and prayers as they go through this difficult time.




"Terminator: Dark Fate"
2hr 8 min
(Arnold Schwarzenegger, Linda Hamilton)

An augmented human and Sarah Connor must stop an advanced liquid Terminator from hunting down a young girl, whose fate is critical to the human race.



"Parasite"
2hr 12 min
(Kang-ho Song, Sun-kyun Lee)

A poor family, the Kims, con their way into becoming the servants of a rich family, the Parks. But their easy life gets complicated when their deception is threatened with exposure.




"Silicon Valley: Season 2 pt 2"
2hr 23 min
(T.J. Miller, Thomas Middleditch)

In the high-tech gold rush of modern Silicon Valley, the people most qualified to succeed are the least capable of handling success. Silicon Valley follows the struggle of Richard Hendricks, a Silicon Valley engineer trying to build his own company called Pied Piper.



"Dark Waters"
2hr 6 min
(Kristen Steward, Naomi Banks)

A corporate defense attorney takes on an environmental lawsuit against a chemical company that exposes a lengthy history of pollution.





KTVB 7

Thursday: 48/28
Sunny

Friday: 52/29
Mostly Sunny

Saturday: 55/39
Mostly Sunny

Sunday: 56/40
Cloudy

Monday: 57/35
Cloudy

Tuesday: 59/36
Sunny

Wednesday: 63/41
Sunny

Thursday: 64/40
Sunny

FEEL
GOOD
today

Physical Plant Door Crew Position

SRCI Physical Plant has an opening on a Door Crew. In order to apply, all of the following criteria must be met (no exceptions):

- Clear conduct for 1 1/2 years (No Major DR or Program Failures)
- Must already be housed in Complex 1-A, 1-B, or 1-C
- Classification 3 or less
- No history of escape, or arson
- 10 years or less remaining on sentence

You must have a general knowledge of all hand tools, power tools, basic knowledge of electrical test equipment, basic mechanical skills, work well with others, able to complete assigned tasks, and able to troubleshoot problems on equipment.

If you are interested in this program and meet all of the above requirements, send a completed Physical Plant Work Assignment Application; along with an AIC Communication expressing your interest to Physical Plant (B344). The applications will be screened by members of the Physical Plant staff. Qualified applicants will need to pass a security screening before being contacted for an interview. Submit applications by April 9, 2020.

Nutrition Information

How can Adults in Custody apply this to ODOC meals?

- All Adults in Custody are encouraged to review the institution menus before attending meals. Exactly how the menu is available for viewing will vary at each institution.
- Use the menu symbols to guide you towards a more nutritious meal. If you want to restrict sodium, fat, or sugar, the menu symbols are there to help you! Use the symbols to note which foods are high in sodium, fat, or sugar before you go to the dining hall, so you can make effective choices at meal time.
- If you have diabetes, ask Health Services for a copy of the Carb Report. This report will list the carbohydrate content of each food so you can plan appropriate meals for yourself. Limiting your carbohydrate intake will help your diabetes medications work more effectively and help you avoid the negative consequences of diabetes. If you don't know how to carb count, or what your carb goal is for each meal, ask your medical provider.



Physical Plant Plumber Position

SRCI Physical Plant has an opening for an AIC Plumber position. In order to apply, all of the following criteria must be met (no exceptions):

- Clear conduct for 1 1/2 years (No Major DR or Program Failures)
- Must already be housed in Complex 1-A, 1-B, or 1-C
- Classification 3 or less
- No history of escape, or arson
- 10 years or less remaining on sentence

You must have a good work ethic & attitude, work in team environment, follow detailed instructions, and follow operational/safety guidelines. Have basic skills in: trouble shooting, hand tools, test equipment, carpentry, plumbing/janitorial, electrical/metal fabrication, mechanical/welding, and hydraulic/pneumatic systems. Be able to install and replace pipes, valves, drain systems, basins, tubs, faucets, lavatories, sinks, gates, hydrants, water heaters, dishwashers, other plumbing fixtures, pressure valves and equipment; repair breaks in pipes; clean and open drains and other lines; repair water pumps and heaters, steam traps condense lines; install and repair steam and gas systems; troubleshoot and repair SRCI systems. Be able to work with human waste.

If you are interested in this program and meet all of the above requirements, send a completed "Physical Plant Work Assignment Application" along with an AIC Communication expressing your interest to Physical Plant (B344). The applications will be screened by members of the Physical Plant Staff. Qualified applicants will need to pass a security screening before being contacted for an interview. Submit application by April 03, 2020.

Chapel A/V Library

During this time of restricted religious programming, please remember that the Chapel Audio/Visual Library is open for business. To request an A/V callout, please select a few videos you would like to see from the A/V catalog in the back of the white Chapel Library binder in your housing unit. Then complete a yellow "Video Request Form" and send it in. We look forward to seeing you!

Religious Services

Due to concerns regarding COVID-19, all group Services and Classes at the Chapel are suspended until further notice. This applies to both SRCI & SRCM. Individual call-outs with Chaplains and A/V call-outs will continue. The Chapel Library will still be operational and process requests. Thank you for your patience during these challenging times.