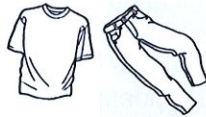




SECURITY



Clothing Room Information

Clothing Room operates showers at various times that are call-out only. No one who is not on a pre-approved turnout or who has not received staff authorization to be in the Clothing Room are allowed to come to the Clothing Room and ask for clothing or other items. There are designated line movements for this, as well as mainline showers.

If an emergency item is needed, special clothing or bedding needs can be addressed by using call pass from your housing unit or during the afternoon yard line movement. These include, but are not limited to, boot issue, clothing replacement, and/or bedding. Clothing Room Staff will immediately begin issuing conduct orders and/or misconduct reports for AICs who come to the Clothing Room without authorization.

Further, clothing room is not accepting any more applications at this time.

/s/ J. Hernandez, Clothing Room Sergeant

ACTIVITIES



Unscheduled Change to TV Programming

SPANISH TELEVISION SERVICE CHANGES: Oregon Department of Corrections (ODOC) confirms that our Spanish speaking television broadcast providers have changed current package content. Due to this change, effective May 01, 2022, ODOC Institutions will continue to have access to the following Spanish TV content: Univision, UniMas, Telemundo, and will now also have TUDN added. TUDN has not been available to ODOC Sites in the past and is a big soccer (futbol) channel.

Also, the following content will no longer be supported effective that same date: Galavision, History en Español, Discovery en Español, Universo, Azteca America. History and Discovery TV content will continue as available offerings only being displayed in English.

Both ODOC ICS-PMO and the Television contract provider appreciate your understanding regarding this change of service.

=====

ATTENCION! NOTIFICACION DE CAMBIO SIN AVISO A LA PROGRAMACIÓN DE TELEVISIÓN

FECHA DE NOTIFICACION: 14 de Abril de 2022
ASUNTO: Aviso de Cambios en el Servicio de Televisión en Español

El Departamento de Correcciones (ODOC) confirma que nuestros proveedores de transmision de television en Español han cambiado el contenido. Debido a este cambio, a partir del 1 de Mayo de 2022, las instituciones de ODOC seguirán teniendo acceso a los siguientes contenidos de television en Español: Univision, UniMás, y Telemundo. Ahora también se agregará TUDN. TUDN no ha estado disponible para los sitios de ODOC en el pasado y es un gran canal de fútbol.

Además, los siguientes contenidos dejarán de ser apoyados a partir de esa misma fecha: Galavision, History en Español, Universo, y Azteca America. Los contenidos de History y Discovery TV seguirán siendo disponibles solo en Inglés.

Tanto el ODOC ICS-PMO como el proveedor del contrato de television agradecen su comprensión respecto a este cambio de servicio.

/s/ A. Powers, Activities Manager

Memorial Healing Garden Visiting/Photos

The Asian Pacific Family Club proudly informs the OSP community of the process available to schedule visits and photos in the Memorial Healing Garden. Please send an AIC communication form to the APFC to schedule visits in the Memorial Healing Garden. When submitting a request, please be sure that your work hours and schedule does not conflict. All visiting/photo requests will be submitted to staff for processing every Tuesday; therefore, call passes will be issued for the following week.

Due to programs being held in the Memorial Healing Garden, visiting slots are limited to the following schedule listed below. The cost of a 4X6 photo is \$1.50 each; all proceeds raised from the Memorial Healing

Garden Photo Program goes toward the care, sustainability and maintenance of the koi pond. Please anticipate that photo prints take approximately a month for processing.

Sunday 7:45-9:45am and 1:30-3:30pm

Monday 12:00-2:45pm

Tuesday 12:00-2:45pm

Wednesdays closed for maintenance

Thursday 7:45-9:45am-12:00-2:45pm

Friday 1:30-2:45pm

Saturday 12:00-2:45PM

Please see information channel 1.1 for continuous updates. Thank you.

/s/ A. Powers, Activities Manager

MISCELLANEOUS

ICH Unit Peer Companion Position Announcement

We believe that AICs who have proven to be successful in the prison community can provide a valuable resource to peers within that community. By listening to and mentoring peers who are struggling with various disabilities, peer companions can help teach them how to more effectively and productively manage their own responses to their environment.

Mental Health Special Housing is now hiring for three peer companions on the Intermediate Care Housing (ICH) unit. The individuals selected for this position will report to the ICH unit, yard, and/or treatment lounge for their shifts. We are looking for motivated, responsible individuals who have the willingness to work with both our elderly and special needs population. It is important for unit peer companion candidates to behave in a manner that is respectful, safe, confidential, and honest--modeling patience, respectful communication, and the following of all unit and institution rules.

ICH unit peer companions will have specific shifts and are responsible for assisting unit staff, QMHPs and treatment staff in ensuring that identified AICs housed on the ICH are getting their basic and daily needs met, which helps to improve their functioning and improve their overall quality of life while incarcerated.

Duties may also include escorting individuals to appointments, assisting individuals in groups, guiding or accompanying individuals who have difficulty walking or who are resistant to engaging in activities outside of their cells to activities in the day room, treatment lounge, or out for ICH yard time.

Please submit an application AIC communication form to Tyann Etzel, ICH Program Manager if you are

interested. Applications will be accepted until this position is full. To be eligible, you must be an incentive level 3 and have clear conduct for at least one year; it is preferred that you have one or more years left on your sentence.

/s/ T. Etzel, ICH Program Manager

Education Updates

FAFSA is available in July 2023. AICs are sending AIC communication forms requesting FAFSA and there are no forms or information for Education to give out. When July 2023 gets closer, DOC Education Unit will send out updated information when it is available.

The next Corban class is currently postponed due to Corban's request. It will not start in Fall 2022. We are uncertain if it will begin in January 2023 or later.

Once we know when Corban would like to start their next class, we will advertise in the AIC newsletters and interested students can apply then.

/s/ J. Norton, DOC Education, Training & Treatment Manager



Activities of Daily Living (ADL) Aide Positions

OSP Health Services is looking for and accepting applications for Activities of Daily Living (ADL) Aides for General Population. Duties would include assisting AICs to medication lines, meals, to and from showers, cell sanitation, and other activities of daily living. Shifts available Sunday – Saturday from 5:30 am – 2:00 pm and 1:00 pm to 8:30 pm. Starting at 10 PRAS. The individuals selected would report to the designated housing unit for their shifts. We are looking for motivated, responsible individuals who have the willingness to work with all other AICs who need additional support caring for themselves. To be eligible you must be an Incentive Level 2 or 3 and have clear conduct for at least one year.

/s/ S. Bailey, BSN, RN, Health Services

Paint Shop Position



Physical Plant is accepting applications in the Paint Shop for the following position:

Paint Crew – 10 points – 6:30 am – 4:00 pm Monday-Thursday

The selected candidates will have the closest matching skills to those listed below.

Desired skills:

- Self-motivated individual with a desire to learn skills for the outside.
- Willingness to take direction, criticism, and work with others to accomplish tasks.

- Experience using hand tools, paint brushes, and rollers.
- Able to lift 50-75 pounds frequently.
- Reliable individuals who maintain regular attendance.

Non-negotiable requirements:

- 12 months at this facility with clear conduct.

Send a completed AIC job application to Physical Plant J. Trevino.

/s/ J. Trevino, Physical Plant

General Maintenance Shop Position

Physical Plant is accepting applications in the General Maintenance Shop. The selected candidates will have the closest matching skills to those listed below. Monday to Friday, hours of work 6:30 am -2:00 pm.

- Willing to be flexible and hard working.
- Self-motivated individual with a desire to learn.
- Willingness to take direction, criticism, and work with others to accomplish tasks.
- Able to lift 75 pounds, work in confined spaces, work on ladders and scaffolding.
- Must be able to work well with others and give and receive constructive criticism.

Please send an application to Mr. Large in the Physical Plant.

/s/ N. Large, Physical Plant

OCE Open Position Announcements – Statewide

EOCI Telemarketing Agent

OCE Program Location – *EOCI Contact Center*

The OCE EOIC Contact Center is recruiting for multiple Telemarketing Agent positions. Applicants must adhere to a high quality standard in a fast-paced environment while meeting deadlines. Agents must be motivated and able to maintain a professional attitude at all times. Position awards PRAS points, with the opportunity to earn a Team Goal Award and a production-based Individual Meritorious Award. This position has opportunities for reviews, promotions and advancement. The current schedule is Monday-Friday, 7:00 am-3:00 pm.

Duties include:

- Agents in this out-bound contact center perform lead generation calls. Lead generation is the process of attracting leads from someone who has indicated interest in the product or service being sold
- Learning new software programs and procedures

Skills that enhance the experience of successful applicants (not required):

- Personal experience – previous successful work in an OCE shop; a humble and inquisitive work mindset with a willingness to learn
- Computer keyboarding experience
- Software experience –Microsoft Office Suite (Word, Excel)

Applicants must meet the following qualifications:

- Have a valid social security number or equivalent
- Have at least six (6) months' time incarcerated with clear conduct and no program failures in the past six (6) months
- Have no convictions for ID Theft, or Computer-related crimes
- Not involved in conflicting programs or activities during the assigned shift
- Be willing to sign a twelve (12)month retention agreement
- Current OCE workers must have fulfilled at least one (1) year in current position to be eligible to apply
- Incentive level 2 or 3
- A release date after June, 2026, on current sentence
- Read proficiently and speak English language clearly

Essential functions include ability to:

- Remain seated at a monitor and operate a computer for extended periods of time throughout the work day
- Communicate respectfully with staff, AICs and clients
- Work in an office setting subject to potential interruptions and background noises
- Receive training and quality-control advice and corrections from other AICs and staff

If you are interested in becoming highly marketable upon release, utilizing modern software, and making a difference within OCE, DOC, and the community, this position may be what you've been looking for. All applicants will need to pass a DOC/OCE security screening and OCE interview before being considered for the position.

Application submission process:

If you are interested in applying, please complete an OCE AIC Work Application referencing EOIC Telemarketing agent as the position. Submit paperwork by May 25, 2022 to OCE People Program and Services- S. Thomas C/O OCE Administration 3691 State St Salem, Or 97309

NOTE: Any transfer is subject to safety protocols and may delay the process.

TRCI- OCE Maintenance

OCE Program Location – *TRCI Laundry/ Woodshop*

The OCE TRCI shop is recruiting for an experienced Maintenance worker. Applicants must pay attention to detail and adhere to a high quality standard in a fast-paced environment while meeting deadlines. Workers must be motivated and able to maintain a professional attitude at all times. Position awards PRAS points, with the opportunity to earn a Team Goal Award. This position has opportunities for reviews, promotions and advancement.

Duties include:

- Setup and operation of conventional and specialized equipment
- Care of all associated equipment and clean-up daily
- Keep machines, mechanical equipment, or the structure of an establishment in repair
- Duties may involve pipe fitting; insulating; welding; machining; carpentry; repairing electrical or mechanical equipment; installing, aligning, balancing new equipment and preventative maintenance

Skills and training that enhance the experience of successful applicants (not required):

- Willingness to complete production work and shop repairs with a mechanical aptitude
- Ability to read blueprints, instructions and drawings
- License or training in a trade such as pipe fitter, electrician, etc.

Applicants must meet the following qualifications:

- Have a valid social security number or equivalent
- Have at least six (6) months' time incarcerated with clear conduct and no program failures in the past six (6) months
- A release date after June, 2026, on current sentence
- Not involved in conflicting programs or activities during the assigned shift
- Be willing to sign a twelve (12)month retention agreement
- Current OCE workers must have fulfilled at least one (1) year in current position to be eligible to apply
- Incentive level 2 or 3

Essential functions include ability to:

- Must be able to lift up to 40 lbs.
- Remain standing operating machinery for extended periods of time throughout the work day
- Work in a production setting with loud background noise

- Maintain safety controls and equipment including wearing correct Personal Protection Equipment (PPE)
- Receive training and quality-control advice and corrections from other AICs and staff
- Communicate respectfully with staff, AICs and clients
- Must be a self-starter with limited direction from supervisor
- Must be able to stand on concrete floors for extended periods of time

If you are interested in becoming highly marketable upon release, utilizing modern production machinery, and making a difference within OCE, DOC, and the community, this position may be what you've been looking for. All applicants will need to pass a DOC/OCE security screening and OCE interview before being considered for the position.

Application submission process:

If you are interested in applying, please complete an OCE AIC Work Application referencing TRCI Journeyman Maintenance as the position. Submit paperwork by May 25th, 2022 to OCE People, Programs and Service C/O OCE Administration 3691 State St Salem, Or 97309

NOTE: Any transfer is subject to safety protocols and may delay the process.

TRCI Production CADD Operator

OCE Program Location – *TRCI Woodshop*

- The OCE TRCI Woodshop is recruiting for a Production CADD Operator. Applicants must pay attention to detail and adhere to a high quality standard in a fast-paced environment while meeting deadlines. Workers must be motivated and able to maintain a professional attitude at all times. Position awards PRAS points, with the opportunity to earn a Team Goal Award. This position has opportunities for reviews, promotions and advancement. The schedule will require you to work 5 days per week which may include weekends.

Duties include:

- Develop and design products to support the OCE Woodshop production and fabrication
- Generate modular 3D computer models, complete with dimensions, bills of materials, cut lists, details of the design process, and realistic renderings

Skills that enhance the experience of successful applicants (not required):

- Experience with Microsoft products; Word and Excel

- Drafting or solid modeling experience using the following software AutoCAD and Autodesk Inventor
- Knowledge in or be able to learn:
 - Practical application of engineering science, design techniques, tools, and principals involved in production of precision technical plans, blueprints, drawings, and models
 - Machines and tools, including their designs uses, repair, and maintenance
 - Raw materials, production processes, quality control, costs, and other techniques for maximizing the effective manufacture and distribution of goods
 - Arithmetic, algebra, geometry, calculus, statistics, and their applications
- Personal experience – previous successful work in an OCE shop; a humble and inquisitive work mindset with a willingness to learn

Applicants must meet the following qualifications:

- Have a valid social security number or equivalent
- Have at least six (6) months' time incarcerated with clear conduct and no program failures in the past six (6) months
- Not involved in conflicting programs or activities during the assigned shift
- Be willing to sign a twelve (12) month retention agreement
- Current OCE workers must have fulfilled at least one (1) year in current position to be eligible to apply
- Incentive level 2 or 3
- A release date after June, 2026 on current sentence

Essential functions include ability to:

- Remain seated at a monitor and operate a computer for extended periods of time throughout the work day
- Communicate respectfully with staff and AICs
- Work in an office setting subject to potential interruptions and background noises
- Receive training and quality-control advice and corrections from other AICs and staff
- Balance multiple time-sensitive projects with deadlines at the same time
- Stay on task while working in a team setting and independently, depending on the project
- Maintain safety controls and equipment including wearing correct Personal Protection Equipment (PPE)
- Must be a self-starter with limited direction from supervisor

If you are interested in becoming highly marketable upon release, utilizing modern production machinery, and making a difference within OCE, DOC, and the community, this position may be what you've been looking for. All applicants will need to pass a DOC/OCE security screening and OCE interview before being considered for the position.

Application submission process:

If you are interested in applying, please complete an OCE AIC Work Application referencing TRCI Woodshop Cadd as the position. Submit paperwork by May 25th, 2022 to OCE-People Program and Services-S.Thomas C/O OCE Administration 3691 State St Salem, Or 97309

NOTE: Any transfer is subject to safety protocols and may delay the process.

/s/ S. Thomas, OCE AIC Workforce Coordinator



A Point to Ponder

“Opportunity is missed by most people because it is dressed in overalls and looks like work.”

– Thomas Edison

OSP CALORIE MENU WEEK 1: April 25 2022 THROUGH May 1 2022

Monday 4/25/22	Tuesday 4/26/22	Wednesday 4/27/22	Thursday 4/28/22	Friday 4/29/22	Saturday 4/30/22	Sunday 5/1/22
<ul style="list-style-type: none"> <input type="checkbox"/> Pancakes - 3 ea (524) ♥ Oatmeal - 8 oz (138) ♥ Canned Fruit - 4 oz (60) ♥ Hard Boiled Egg - 1 ea (70) ⊗ Syrup - 2 fl oz (168) □ Margarine - 0.5 oz (80) ♥ Skim Milk - 1.6 fl oz (169) ⊗ Sugar - 2 pkts (22) Coffee - s/s (0) 	<ul style="list-style-type: none"> ♥ Veggie Scramble - 4 oz (108) ♥ Dry Cereal - 8 oz cup (119) ♥ Fresh Fruit - 1 ea (8) □ Fried Potatoes - 6 oz (165) ♥ Wheat Toast - 2 SL (164) □ Margarine - 0.5 oz (80) ♥ Skim Milk - 1.6 fl oz (169) ⊗ Sugar - 2 pkts (22) Coffee - s/s (0) 	<ul style="list-style-type: none"> □ Beef Hash - 8 oz (187) ♥ 9 Grain Cereal - 8 oz (100) ♥ Canned Fruit - 4 oz (60) ♥ Wheat Toast - 2 SL (164) □ Margarine - 0.5 oz (80) ▽ Catsup - 0.5 oz (17) ♥ Skim Milk - 1.6 fl oz (169) ⊗ Sugar - 2 pkts (22) Coffee - s/s (0) Meat Sub: Peanut Butter - 1.5 oz (239) Meat Sub: Plain Potatoes - 6 oz (165) 	<ul style="list-style-type: none"> Egg & Cheese Muffin ♥ English Muffin - 1 ea (286) ♥ Dry Cereal - 8 oz cup (119) ♥ Fresh Fruit - 1 ea (8) □ Fried Egg - 1 ea (80) □ Cheese - 1 SL (50) □ Fried Potatoes - 6 oz (165) ♥ Skim Milk - 1.6 fl oz (169) ⊗ Sugar - 2 pkts (22) Coffee - s/s (0) 	<ul style="list-style-type: none"> ◇ French Toast - 3 sl (793) ♥ Farina - 8 oz (140) ♥ Canned Fruit - 4 oz (60) ⊗ Syrup - 2 fl oz (168) □ Margarine - 0.5 oz (80) ♥ Skim Milk - 1.6 fl oz (169) ⊗ Sugar - 2 pkts (22) Coffee - s/s (0) 	<ul style="list-style-type: none"> Poultry Sausage Patty & Eggs □ Poultry Sausage Pattie - 2 oz (172) ♥ Canned Fruit - 4 oz (60) □ Fried Eggs - 2 ea (160) □ Fried Potatoes - 6 oz (165) ♥ Wheat Toast - 2 SL (164) ⊗ Jelly - 1 oz (80) □ Margarine - 0.5 oz (80) ♥ Skim Milk - 1.6 fl oz (169) ⊗ Sugar - 2 pkts (22) Coffee - s/s (0) Meat Sub: Peanut Butter - 1 oz (159) 	<ul style="list-style-type: none"> Coffee Cake - 1 ea (308) ♥ Oatmeal - 8 oz (138) ♥ Fresh Fruit - 1 ea (8) ♥ Hard Boiled Egg - 1 ea (70) ♥ Skim Milk - 1.6 fl oz (169) ⊗ Sugar - 2 pkts (22) Coffee - s/s (0)
<ul style="list-style-type: none"> Grilled Cheese Sandwich ♥ Tomato Soup - 10 fl oz (68) □ Cheese - 4 SL (200) ♥ Grilled Bread - 4 SL (328) ♥ Green Beans - 6 oz (56) ◇ Chips - 1 bag (120) ♥ Fresh Fruit - 1 ea (8) ♥ Fruit Drink - 8 fl oz (5) 	<ul style="list-style-type: none"> Chicken over Lettuce Salad ♥ Lentil Soup - 10 fl oz (144) ♥ Grilled Chicken - 3 oz (153) ♥ Lettuce - 10 oz bowl (12) ♥ Onions - 1 oz (11) □ Shredded Cheese - 1 oz (80) □ 1000 Island Dressing - 2 oz (204) ♥ Broccoli - 6 oz (48) ♥ Bread Stick - 1 ea (94) ♥ Fresh Fruit - 1 ea (8) ♥ Fruit Drink - 8 fl oz (5) 	<ul style="list-style-type: none"> Meat Loaf - 5 oz (216) ▽ Beet Salad - 6 oz (111) ♥ Mashed Potatoes - 6 oz (149) □ Beef Gravy - 2 fl oz (46) ♥ Carrots - 6 oz (43) ♥ Dinner Roll - 1 ea (308) □ Margarine - 0.5 oz (80) ⊗ Pudding - 4 oz (91) Tea - s/s (0) 	<ul style="list-style-type: none"> Tacos ♥ Cowboy Salad - 6 oz (129) □ Taco Meat - 4 oz (203) □ Shredded Cheese - 1 oz (80) ♥ Lettuce - 4 oz (6) ♥ Salsa - 2 oz (26) ♥ Flour Tortillas - 2 ea (326) ♥ Cauliflower - 6 oz (32) ♥ Fresh Fruit - 1 ea (8) ♥ Fruit Drink - 8 fl oz (5) 	<ul style="list-style-type: none"> Tuna Salad Sandwich ♥ ⊕ Soup of the Day - 10 fl oz (144) ♥ Tuna Salad - 4 oz (150) □ Shredded Lettuce - 2 oz (3) ♥ Wheat Hoagie - 1 ea (230) ♥ Carrots - 6 oz (43) ◇ Chips - 1 bag (120) ♥ Fresh Fruit - 1 ea (8) ♥ Fruit Drink - 8 fl oz (5) 	<ul style="list-style-type: none"> ⊕ BBQ Pulled Pork Sandwich □ Coleslaw - 6 oz (134) ⊗ BBQ Pork - 4 oz (193) ♥ Hoagie - 1 ea ◇ Mac & Cheese - 6 oz (242) ♥ Green Beans - 6 oz (56) ♥ Fresh Fruit - 1 ea (8) ♥ Fruit Drink - 8 fl oz (5) 	<ul style="list-style-type: none"> □ Chicken Drumsticks - 2 ea (393) ♥ Tossed Salad - 10 oz bowl (12) □ French Dressing - 1 oz (102) ♥ Mashed Potatoes - 6 oz (149) □ Chicken Gravy - 2 fl oz (26) ♥ Peas - 6 oz (92) ♥ Wheat Dinner Roll - 1 ea (154) □ Margarine - 0.5 oz (80) ◇ Ice Cream - 1 ea (80) ♥ Fruit Drink - 8 fl oz (5)
<ul style="list-style-type: none"> ⊕ Ham & Bean Stew - 10 fl oz (306) ♥ Tossed Salad - 10 oz bowl (12) □ Russian Dressing - 1 oz (102) ♥ Brown Rice - 6 oz (167) ♥ Peas - 6 oz (92) ♥ Bread Stick - 1 ea (94) Tea - s/s (0) 	<ul style="list-style-type: none"> ⊕ Pizza (choice) - 1.svg (433) ♥ Tossed Salad - 10 oz bowl (12) □ Ranch Dressing - 1 oz (102) ♥ Vegetable Soup - 10 fl oz (63) ⊗ Mango Bar - 1 ea (284) Tea - s/s (0) 	<ul style="list-style-type: none"> □ Chicken Pot Pie - 6 oz (221) ♥ Tossed Salad - 10 oz bowl (12) □ Basil Dressing - 1 oz (102) ▽ Biscuits (large) - 2 ea (592) ♥ Broccoli - 6 oz (48) ◇ Lemon Bar - 1.svg Tea - s/s (0) 	<ul style="list-style-type: none"> □ Turkey a La King - 6 oz (152) ♥ Tossed Salad - 10 oz bowl (12) □ Creamy HoneyMustard - 1 oz (102) ♥ White Rice - 6 oz (169) ♥ Blended Vegetables - 6 oz (98) ♥ Wheat Bread - 2 sl (164) □ Margarine - 0.5 oz (80) Tea - s/s (0) 	<ul style="list-style-type: none"> Bean Burritos □ Texas Slaw - 6 oz (117) ♥ Seasoned Beans - 6 oz (153) □ Shredded Cheese - 1 oz (80) ♥ Spanish Rice - 6 oz (130) ♥ Wheat Tortillas - 2 ea (314) ♥ Salsa - 2 oz (26) ♥ Fresh Fruit - 1 ea (8) Tea - s/s (0) 	<ul style="list-style-type: none"> ⊕ High fat/cholesterol/sodium (#) Calories 	

⊕ Contains pork or may contain pork ♥ Healthy choice □ High fat/cholesterol ⊗ High sugar ✗ High fat/cholesterol/sugar ▽ High Sodium ◇ High fat/cholesterol/sodium (#) Calories

This menu can help AICs reduce their calorie intake at each meal by showing how many (Calories) each food item contains. Values listed are best estimates based on current foods purchased. MAY/VEGETABLE TRAYS available for lunch & supper meals only. Menu subject to change without notice.

OREGON DOC ADULT IN CUSTODY FOOD SURVEY 2022

Food Services conducts a food survey for AICs every two years. Due to the pandemic in 2020, the survey was postponed. Your input is important to us. Food Service Managers will compile the information and forward the results to Food Service Administration. You will see the results in a newsletter article. Thank you!

1) Listed below are the top main dishes from 2018. Please check your three favorite items.

- | | |
|--|--|
| <input type="checkbox"/> Chicken Drumsticks | <input type="checkbox"/> Chef Salad |
| <input type="checkbox"/> Pizza | <input type="checkbox"/> Pork Loin |
| <input type="checkbox"/> Enchilada Casserole | <input type="checkbox"/> Italian Casserole |
| <input type="checkbox"/> Hamburger | <input type="checkbox"/> Tamale Pie |
| <input type="checkbox"/> Nachos | <input type="checkbox"/> Other _____ |

2) What are your favorite breakfast items? Please check your three favorite items.

- | | |
|---|--|
| <input type="checkbox"/> Fried/Scrambled Eggs | <input type="checkbox"/> Beef Hash |
| <input type="checkbox"/> French Toast | <input type="checkbox"/> Waffles |
| <input type="checkbox"/> Sausage Gravy | <input type="checkbox"/> Hobo Breakfast |
| <input type="checkbox"/> Pancakes | <input type="checkbox"/> Breakfast Muffin Sandwich |
| <input type="checkbox"/> Breakfast Burrito | <input type="checkbox"/> Veggie Scramble |

3) Do you use the menu symbols to help you decide what to eat or how much to eat?

Example: You avoid eating too many of the foods marked as high sodium with a triangle symbol.

Yes, at most meals No, never Sometimes, at some meals

4) Do you use the calorie report to help you decide what to eat or how much to eat?

Yes, at most meals No, never Sometimes, at some meals

5) Which recipes or food items would you like to see removed from the menu?

6) Do you have examples of recipes or food items would you like to see added to the menu?

7) What general suggestions do you have to improve institution meals?

Once you have completed this form, please return it to Food Services by Friday, May 27.

**OREGON DEPARTMENT OF CORRECTIONS
INMATE COMMUNICATION FORM**

FROM

INSTITUTION: _____
INMATE NAME: _____
SID #: _____
UNIT/BUNK: _____
ADDRESS: _____

TO

NAME: Ridderbusch
TITLE: Food Service Manager
ADDRESS: Food Service Dept.
OSP

(Fold Here)