

WALLED STREET BULLETIN

OREGON STATE PENITENTIARY SALEM OREGON

OSP Executive Management Team

April 13, 2023

Page 1

ADMINISTRATION



Trust Account Information

Financial Services is seeking to ensure AICs are provided with information to better understand the administration of debt and obligation collections. AICs with questions regarding their trust account(s) are encouraged to send an AIC communication to Business Services (electronic communications, available on the tablet, preferred).

For detailed information, please read the 'AIC Debt and Obligation Information' addition.

/s/ S. Lane, OSP Supervising Executive Assistant

ACTIVITIES



Memorial Healing Garden Visiting/Photos

The Asian Pacific Family Club proudly informs the OSP community of the process available to schedule visits and photos in the Memorial Healing Garden. Please send an AIC communication form to the APFC to schedule visits in the Memorial Healing Garden. When submitting a request, please be sure that your work hours and schedule does not conflict. All visiting/photo requests will be submitted to staff for processing every Tuesday; therefore, call passes will be issued for the following week.

Due to programs being held in the Memorial Healing Garden, visiting slots are limited to the following schedule listed below. The cost of a 4X6 photo is \$1.50 each; all proceeds raised from the Memorial Healing Garden Photo Program goes toward the care, sustainability and maintenance of the koi pond. Please anticipate that photo prints take approximately a month for processing.

Sunday 7:45-9:45am and 1:30-3:30pm

Monday 12:00-2:45pm

Tuesday 12:00-2:45pm

Wednesdays closed for maintenance

Thursday 7:45-9:45am-12:00-2:45pm



Friday 1:30-2:45pm

Saturday 12:00-2:45PM

Please see information channel 1.1 for continuous updates. Thank you.

/s/ A. Powers, Activities Manager

GROUP LIVING



Tenting

Per the OSP AIC Handbook: AICs are not allowed to hang or place anything that would block the view inside the cell.

Expected Conduct

"You are responsible for everything in your cell and/or housing units at all times, even if you are assigned with another person. The following housing unit guidelines must be met by all AICs:"

"Nothing will be placed on or attached to your cell bars. Cell bars will be kept clean at all times. Nothing will be hung or placed in a manner that would obstruct the officer's view inside the cell."

Please do not hang anything in your cell that would block view into the cell.

/s/ B. Gaither, Group Living Captain

JOB ANNOUNCEMENT

Physical Plant General Maintenance Shop Position



The Physical Plant General Maintenance Shop is hiring. Interested applicants should have a strong desire to work in the Physical Plant performing a wide variety of general maintenance work throughout the institution.

Candidates must be able to lift/carry 80 pounds, be willing to work at heights, and have the ability to work in confined spaces. The successful applicant will exhibit a positive attitude, the ability to work well with others, and a willingness to work under the direction of other Physical Plant Shop Supervisors as needed.

Those chosen to interview will have a minimum of one year good conduct, and have at least one year remaining on their sentence. Preference will be given to applicants with construction experience.

Send completed AIC job application and resume (handwritten is acceptable) to Harris/Physical Plant General Maintenance Shop.

/s/ E. Harris, Physical Plant Gen. Maint. Shop

Physical Plant Electronics Shop Position

The Electronics Shop is accepting applications for AICs interested in a career as a low voltage electrician. This position will give someone an opportunity to go through an apprenticeship program, learn a trade, and earn a LEB electrical license.

The desired candidate will embody this list of personal traits:

- Self-motivated with a desire to learn new skills and perfect their trade.
- Willingness to take direction, constructive criticism, work well with others to accomplish tasks.
- Must be a team player who communicates well with all types of personalities.
- Reliable, maintaining regular attendance with a steady behavior.
- Willing to work off hours when necessary.
- Stay drug and alcohol free during your time here.



All applicants are required to have close to five years left on their sentence or more, must have a year of clear conduct with a level 3 NCI. Must have desire to be able to be a productive member of society when released. High school diploma or GED.

If you would like to leave Department of Corrections with a trade license, making \$80,000-plus a year, and be able to support your family, send applications with Resume to Palmer/ Schaeffer Physical Plant Electronics Shop. Good Luck!

/s/ S. Palmer, Physical Plant Electronics Shop



RELIGIOUS SERVICES

Weekly Chapel Schedule

Saturday, April 15

- 8:00 am LDS
Sweat Lodge/Smudge
Jehovah's Witness
- 1:00 pm Jewish Service
Seventh Day Adventist
- 6:00 pm Calvary Chapel

Sunday, April 16

- 8:00 am Spanish Protestant
Spanish Jehovah's Witness
- 1:00 pm Catholic
Urantia Study
- 6:00 pm Lutheran

Tuesday, April 18

- 1:00 pm Agape
Orthodox Christianity
- 6:00 pm Buddhist

Wednesday, April 19

- 1:00 pm Restorative Justice
- 6:00 pm The Most Excellent Way

Thursday, April 20

- 1:00 pm TUMI
- 6:00 pm Gospel Worship

Friday, April 21

- 1:00 pm Nation of Islam Prayer
Sunni Jumma Prayer

A Point to Ponder

“Success is peace of mind, which is a direct result of self-satisfaction in knowing you made the effort to become the best of which you are capable.”

~ John Wooden



Financial Services

Informational Briefing

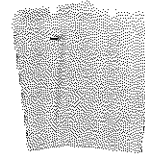
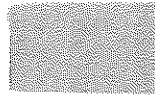
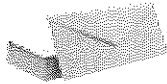
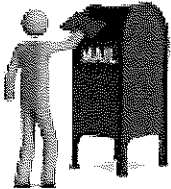
AIC Debt and Obligation Information

Debt / Obligation Type	Collection Schedule	Additional Information
<p>Court Ordered Financial Obligation (COFO)</p>	<ul style="list-style-type: none"> Collected from eligible deposits per ORS 423.105 10% collected for COFO(s) from eligible deposits until the transitional savings trust account reaches \$500 Then, 15% collected for COFO(s) from eligible deposits until obligation(s) are satisfied 	<ul style="list-style-type: none"> The department does not have case-specific information regarding COFOs; AICs are encouraged to contact the court of record regarding their COFO details COFOs are not the same as County and US Court filing fees. Examples of COFOs are restitution, fines, fees, & child support COFOs will continue to collect during the Holiday Buying Period
<p><i>Note: Although the transitional savings trust account is considered an obligation, funds collected are owned by the AIC. Per ORS 423.105, 5% will be collected from eligible deposits and placed into the transitional savings trust account. Funds in the transitional savings trust account are <u>not available until the AIC releases from ODOC custody.</u></i></p>		
<p>DOC Debt</p>	<ul style="list-style-type: none"> Collected from eligible deposits Additionally, collections shall occur the last business day of the month per OAR 291 Div. 158 if funds are available 	<ul style="list-style-type: none"> DOC debt includes but is not limited to debt incurred from various disciplinary fines, copy, and postage advances DOC debt is due upon receipt; if/when funds are not available; funds are advanced and set-up as debt Monthly, AICs may spend up to \$40 of the first \$80 deposited into general spending DOC Debt may be suspended during the Holiday Buying Period unless a new disciplinary fee is applied
<p>County Court Deferred Filing Fee Obligation</p>	<ul style="list-style-type: none"> Collected as funds become available Multiple collections may occur throughout the month Additionally, collections shall occur the last business day of the month 	<ul style="list-style-type: none"> County obligations refer to deferred county filing fees These obligations are incurred when an AIC elects to file with the court and the court approves a deferred filing fee County Court fees will continue to collect during the Holiday Buying Period
<p>Initial Federal / US Court Filing Fee Obligation</p>	<ul style="list-style-type: none"> Collected as funds become available Multiple collections may occur throughout the month Additionally, collections shall occur the last business day of the month 	<ul style="list-style-type: none"> Initial Filing fees can be collected in total and are due upon receipt These obligations are incurred when an AIC elects to file with the court and the court approves a deferred filing fee Initial Federal/US Court filing fees will continue to collect during the Holiday Buying Period
<p>Federal / US Court Deferred Filing Fee Obligation</p>	<ul style="list-style-type: none"> Collected around the beginning of the month 	<ul style="list-style-type: none"> General filing fee collection amount determined by the previous month's deposit(s) 20% of previous months deposits multiplied by the number of cases is deemed collectable Federal/US Court Deferred filing fees will continue to collect during the Holiday Buying Period

Note: Debt / Obligation types appear in order of collection priority. ODOC will comply with garnishment orders upon receipt.

OSP MAILROOM

MAIL TIPS - WEIGHT LIMITS

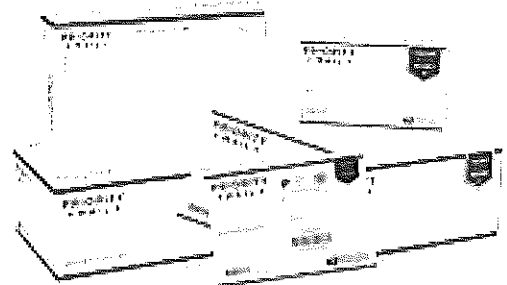
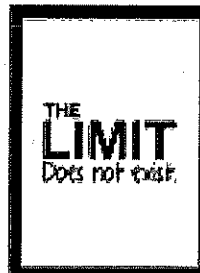


SIZE	# 10 (REGULAR SIZE)	6 X 9	10 X 13	10 X 13
COLOR	MANILA	MANILA	MANILA	WHITE
DOMESTIC WEIGHT LIMIT	2 OZ	2 OZ	5 OZ	12 OZ
AUS./CANADA/ MEXICO/UK	3 OZ	NO INT'L USE	NO INT'L USE	3 OZ
ALL OTHER INTERNATIONAL	1 OZ	NO INT'L USE	NO INT'L USE	3 OZ

PRIORITY MAIL: NO WEIGHT LIMIT

MAIL TIP:

PRIORITY MAIL BOXES DO NOT HAVE TO BE FOLDED INTO THE BOX SHAPE. THEY CAN BE LEFT FLAT AND USED FOR ARTWORK.



AS ALWAYS, PLEASE FEEL FREE TO SEND AN AIC COMMUNICATION FORM
TO THE MAILROOM WITH QUESTIONS.

HEALTH SERVICES



HAZARDOUS MEDICINE

Health Services would like to inform you of changes we are making to the way we provide certain medicine.

Some medicines need special handling because they can harm the person giving them. These are called "hazardous medicines."

Studies have found that healthcare staff who are exposed to these medicines can have side effects from them.

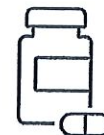
Healthcare staff can protect themselves by wearing protective garments when handling these medicines.

WHAT TO EXPECT

You may see healthcare staff wearing gloves, gowns, or face masks. This is to help limit their contact with hazardous medicines.

Some staff may wear more protective garments than others. This could be due to the type of medicine they are handling or how they are giving it. Not all hazardous medications carry the same risk. It could also just be their personal preference!

If you are taking a hazardous medicine, you will no longer be able to keep it in your cell. This is to help limit exposure to others, not because you have done anything wrong.



Q: IS IT SAFE FOR ME TO TAKE A HAZARDOUS MEDICINE?

A: People take a hazardous medicine when there are more benefits from the medicine than there are risks. One example of a hazardous medication is chemotherapy. Chemotherapy is a medicine that is strong enough to kill cancer cells. It can save the life of a person who has cancer. But, because it is so strong, it can also hurt healthcare staff who handle it. By wearing protective garments, staff can make sure they are healthy enough to keep caring for their patients!

Please talk to your doctor or send a kyte to the pharmacy if you have more questions about hazardous medicine.

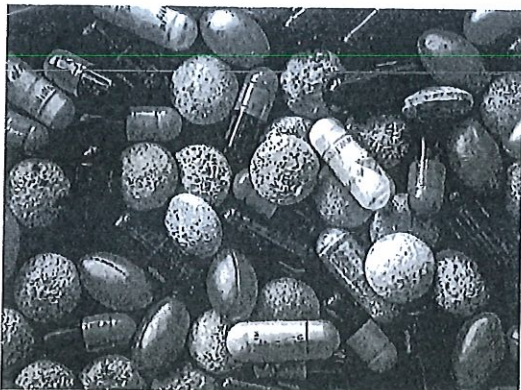


Photo by Raimond Klavins, Unsplash

SERVICIOS DE SALUD



MEDICINA PELIGROSA

Servicios de Salud desea informarle de los cambios que estamos haciendo a la forma en que proporcionamos ciertos medicamentos.

Algunos medicamentos necesitan manejo porque pueden dañar a la persona que los da.

Estos se llaman "peligrosos medicinas".

Los estudios han encontrado que el personal de atención médica que está expuesto a estos medicamentos puede tener efectos secundarios.

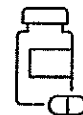
El personal de atención médica puede protegerse usando prendas protectoras cuando manipula estos medicamentos.

QUE ESPERAR

Es posible que vea al personal de atención médica usando guantes, batas o máscaras faciales. Esto es para ayudar a limitar su Contacto con medicamentos peligrosos.

Algunos miembros del personal pueden usar más prendas protectoras que otros. Esto podría deberse al tipo de medicamentos que están manejando o cómo lo están dispensando. No todos los medicamentos peligrosos llevan lo mismo riesgo. ¡También podría ser su preferencia personal!

Si está tomando un medicamento peligroso, ya no podrá guardarlo en su celda. Esto es para ayudar a limitar la exposición a los demás, no porque haya hecho algo malo.



P: ¿ES SEGURO PARA MÍ TOMAR UN MEDICAMENTO PELIGROSO?

R: Las personas toman un medicamento peligroso cuando el medicamento ofrece más beneficios que riesgos. Un ejemplo de un medicamento peligroso es la quimioterapia. La quimioterapia es un medicamento lo suficientemente fuerte como para matar las células cancerosas. Puede salvar la vida de una persona que tiene cáncer. Pero, debido a que es tan fuerte, también puede lastimar al personal de atención médica que lo manipula. ¡Al usar prendas protectoras, el personal puede asegurarse de que estén lo suficientemente saludables como para seguir cuidando a sus pacientes!

Hable con su médico o envíe un kyte a la farmacia si tiene más preguntas sobre medicamentos peligrosos.

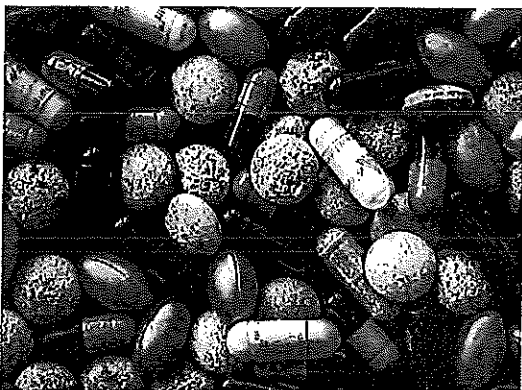


Foto por Raimond Klavins, Unsplash



Mainline

Week at a Glance

Week	Monday 4/17/2023	Tuesday 4/18/2023	Wednesday 4/19/2023	Thursday 4/20/2023	Friday 4/21/2023	Saturday 4/22/2023	Sunday 4/23/2023
Week 2	BREAKFAST Oatmeal - 1.00 CP Canned Fruit - 0.50 CP Pancakes (Sod,Chl) - 3.00 EA Maple Syrup - 2.00 FLOZ Margarine (Sfa) - 1.00 TBS Skim Milk - 16.00 FLOZ Coffee - 8.00 FLOZ Sugar PC - 2.00 EA	Dry Cereal - 1.00 CP Fresh Fruit - 1.00 EA Scrambled Eggs (Sfa,Chl) - 0.33 CP Refried Beans - 0.50 CP Shredded Cheese (Sfa,Chl) - 2.00 TBS Salsa (Sod) - 0.25 CP Flour Tortilla - 1.00 EA Skim Milk - 16.00 FLOZ Coffee - 8.00 FLOZ Sugar PC - 2.00 EA	Multigrain Hot Cereal - 1.00 CP Canned Fruit - 0.50 CP Waffles (Sod) - 2.00 EA Peanut Butter (Sfa) - 3.00 TBS Skim Milk - 16.00 FLOZ Coffee - 8.00 FLOZ Sugar PC - 2.00 EA	Dry Cereal - 1.00 CP Fresh Fruit - 1.00 EA Fried Egg (Sfa,Chl) - 1.00 EA Sliced Cheese (Sfa) - 1.00 SLC English Muffin (Sfa,Chl) - 1.00 EA Fried Potatoes - 0.75 CP Skim Milk - 16.00 FLOZ Coffee - 8.00 FLOZ Sugar PC - 2.00 EA	Farina - 1.00 CP Canned Fruit - 0.50 CP Sausage Gravy (Chl) - 0.75 CP Biscuit (Sfa,Sod) - 1.00 EA Fried Potatoes - 0.75 CP Skim Milk - 16.00 FLOZ Coffee - 8.00 FLOZ Sugar PC - 2.00 EA	Cornmeal Hot Cereal (Sfa,Sod) - 1.00 CP Canned Fruit - 0.50 CP Scrambled Eggs (Sfa,Chl) - 0.33 CP *Pork Bacon (Sfa,Sod,Chl) - 3.00 SLC Wheat Toast - 2.00 SLC Jelly - 2.00 TBS Margarine (Sfa) - 1.00 TBS Skim Milk - 16.00 FLOZ Coffee - 8.00 FLOZ Sugar PC - 2.00 EA	Oatmeal - 1.00 CP Fresh Fruit - 1.00 EA Hard Boiled Egg (Sfa,Chl) - 1.00 EA Breakfast Pastry (Sfa,Chl) - 1.00 EA Skim Milk - 16.00 FLOZ Coffee - 8.00 FLOZ Sugar PC - 2.00 EA
Week 2	LUNCH Coleslaw (Sod) - 0.75 CP *Grilled Ham and Cheese Sandwich on Wheat (Sod,Chl,Sfa) - 1.00 EA Carrots - 0.75 CP Chips - 1.00 BAG Fresh Fruit - 1.00 EA Fortified Fruit Drink - 8.00 FLOZ	*Soup of the Day (Sod,Chl) - 10.00 FLOZ Chicken-Bacon-Ranch Salad (Chl) - 1.00 SV Sliced Onions - 2.00 TBS Shredded Cheese (Sfa,Chl) - 2.00 TBS Salad Dressing (Sfa,Sod) - 2.00 FLOZ Blended Vegetables - 0.75 CP Breadstick - 1.00 EA Fresh Fruit - 1.00 EA Fortified Fruit Drink - 8.00 FLOZ	Minestrone Soup - 10.00 FLOZ Tuna Salad (Chl) - 0.50 CP Shredded Lettuce - 0.25 CP Wheat Hoagie Roll - 1.00 EA Broccoli - 0.75 CP Chips - 1.00 BAG Fresh Fruit - 1.00 EA Fortified Fruit Drink - 8.00 FLOZ	Lentil Soup - 10.00 FLOZ *Meat & Cheese Sandwich on Wheat (Sod,Chl) - 1.00 EA Sliced Onions - 2.00 TBS Shredded Lettuce - 0.25 CP Mayo & Mustard (Sod) - 2.00 TBS Carrots - 0.75 CP Chips - 1.00 BAG Fresh Fruit - 1.00 EA Fortified Fruit Drink - 8.00 FLOZ	Texas Slaw - 0.75 CP Mexican Picadillo (Chl,Sfa) - 1.25 CP Brown Rice - 0.75 CP Broccoli - 0.75 CP Wheat Tortilla (Sfa,Sod) - 2.00 EA Fresh Fruit - 1.00 EA Fortified Fruit Drink - 8.00 FLOZ	*Soup of the Day (Sod,Chl) - 10.00 FLOZ Chicken & Rice Casserole (Chl) - 1.25 CP Blended Vegetables - 0.75 CP Wheat Dinner Roll - 1.00 EA Margarine (Sfa) - 1.00 TBS Fresh Fruit - 1.00 EA Fortified Fruit Drink - 8.00 FLOZ	Lettuce Salad - 1.00 CP Salad Dressing (Sod) - 1.00 FLOZ Roast Turkey (Chl) - 3.00 OZCKD Poultry Gravy - 2.00 FLOZ Mashed Potatoes - 0.75 CP Green Beans - 0.75 CP Wheat Bread - 2.00 SLC Margarine (Sfa) - 1.00 TBS Chocolate Cupcake (Chl) - 1.00 EA Fortified Fruit Drink - 8.00 FLOZ
Week 2	DINNER Lettuce Salad - 1.00 CP Salad Dressing - 1.00 FLOZ Chicken Stir-Fry (Chl) - 0.50 CP Brown Rice - 0.75 CP Stir-Fry Vegetables - 0.75 CP Wheat Bread - 2.00 SLC Margarine (Sfa) - 1.00 TBS Tea - 8.00 FLOZ	Lettuce Salad - 1.00 CP Salad Dressing - 1.00 FLOZ Creole Chicken (Chl) - 1.00 CP Brown Rice Platf - 0.75 CP Peas - 0.75 CP Wheat Dinner Roll - 1.00 EA Margarine (Sfa) - 1.00 TBS Fruit Bar (Sfa,Sod,Chl) - 1.00 EA Tea - 8.00 FLOZ	Lettuce Salad - 1.00 CP Salad Dressing - 1.00 FLOZ Chili Mac (Chl,Sfa) - 1.25 CP Green Beans - 0.75 CP Cornbread (Sod,Chl) - 1.00 EA Margarine (Sfa) - 1.00 TBS Tea - 8.00 FLOZ	Lettuce Salad - 1.00 CP Salad Dressing - 1.00 FLOZ Cheese Pizza (Sod,Chl,Sfa) - 1.00 EA Blended Vegetables - 0.75 CP Peas & Carrots - 0.75 CP Gelatin & Whip Topping (Sfa) - 0.50 CP Tea - 8.00 FLOZ	Lettuce Salad - 1.00 CP Salad Dressing - 1.00 FLOZ Hot Roast Beef Sandwich (Sod,Chl,Sfa) - 1.00 SV Beef Gravy - 1.00 SV Mashed Potatoes - 0.75 CP Peas & Carrots - 0.75 CP Gelatin & Whip Topping (Sfa) - 0.50 CP Tea - 8.00 FLOZ	Taco Salad with Meat (Chl,Sfa) - 1.00 SV Seasoned Beans - 0.75 CP Shredded Cheese (Sfa,Chl) - 2.00 TBS Salsa (Sod) - 0.25 CP Salad Dressing (Sfa,Sod) - 2.00 FLOZ Spanish Rice - 0.75 CP Tortilla Chips - 2.00 OZ Tea - 8.00 FLOZ	Lettuce Salad - 1.00 CP Salad Dressing - 1.00 FLOZ Meat Sauce (Chl,Sfa) - 0.75 CP Spaghetti - 0.75 CP Cauliflower - 0.75 CP French Bread - 1.00 SLC Garlic Margarine (Sfa) - 1.00 TBS Fresh Fruit - 1.00 EA Tea - 8.00 FLOZ

Menu is subject to change without notice. Appropriate food substitutions are approved by a Dietitian.
*Items contain or may contain pork. Meat-Alternative Trays are available at lunch and dinner only.

Sod = High Sodium Sfa = High Saturated Fat Chl = High Cholesterol Sug = High Sugar

© Powered By: Culinary Suite

