



ADMINISTRATION

Notice Regarding Petition Requesting Amendment of Administrative Rule



On January 9, 2024, the Oregon Department of Corrections received a petition requesting an amendment to OAR 291-105-0015. A copy of the petition is posted in the legal library rule manual.

Pursuant to ORS 183.390(2), the Oregon Department of Corrections invites comment on OAR 291-105-0015 including any comments on whether options exist for achieving the rule's substantive goals in a way that reduces any negative economic impact on businesses. Any public comment must be received no later than March 11, 2024, at 5:00 PM. Comments must be submitted in writing to the address below:

Rules Coordinator
Department of Corrections
3601 State St.
Salem, OR 97301

Rulemaking comments must be provided to the DOC Rules Coordinator in writing at the address in the rulemaking notice. Communications submitted should be limited to providing comments on only one division and topic per communication. Do not include multiple divisions and topics in one communication, they will be returned. DOC notices and rules are available for review and copies in the AIC Law Library.

Proposed, temporary, and permanently adopted rules are available for review in the AIC Legal Library. Personal copies may be obtained by sending form CD1762, "Legal Photocopy Request Form", to R. Polk, Library Coordinator.

AICs in special housing units may access copies of proposed rules and permanently adopted rules for review by asking the housing unit officer. Personal copies may be obtained by sending form CD1762, "Legal Photocopy Request Form", to R. Polk, Library Coordinator.

Proposed rules will be copied free of charge. If you want a personal copy of a permanently adopted rule, there will be a charge for the copy.

Comments on proposed rules may be submitted by AIC communication or letter to: J. Vaughn, Rules Coordinator, DOC Rules Office.

/s/ J. Vaughn, DOC Rules Coordinator

GENERAL SERVICES



Plumbing Work/Repair Requests

For timely processing of work/repair requests for plumbing in your housing cell or at your work location, please follow the procedure outlined below:

For housing cell:

Notify your tier officer or block sergeant as soon as an issue arises. Provide a brief but detailed explanation.

An electronic work order request will be submitted to the Physical Plant Office for processing.

For work location (i.e., OCE, Food Services, Yard):

Notify your staff supervisor as soon as an issue arises. Provide a brief but detailed explanation. An electronic work order request will be submitted to the Physical Plant Office for processing.

All work order requests are prioritized based on the nature of the request and the current workload of the Plumbing Shop. Lower priority items such as a dripping cell faucet will be addressed as the workload allows.

/s/ J. Ellertson, Physical Plant Manager

ACTIVITIES



Elderly Prisoners Catch a Break on Medicare

Part B

By Eike Blohm, MD (March 2023)

A change in Medicare rules ends a years-long policy of forcing elderly prisoners to pay for benefits they are literally not free to use or else face life-long penalties.

Americans 65 years and older are covered by Medicare, the government-run health insurance. Medicare consists of several parts: Part A covers hospitalizations; Part B covers doctor's office visits and outpatient procedures; Part C is Part A & B offered

through a private insurer with additional benefits like dental or vision; Part D covers prescriptions.

Enrollment in Part A is automatic and free. Enrollment in Part B is not automatic, though, and it is not free but cost about \$135 per month depending on income. Failure to enroll in Part B by age 65 increases the premium by 10% for each year of delay. Thus, a person who did not enroll at age 65 but age 70 will pay a 50% higher premium for the rest of their life.

This created a problem for elderly prisoners. They could [not] pay the Part B premium while incarcerated, although Medicare is precluded from providing services to prisoners. Or they could pay higher premiums after release from prison, adding to the financial hardship many returning citizens already face. Others had the choice made for them; it is impossible to pay the Part B premium while working a prison job that pays 12 cents per hour.

Now Medicare has created a Special enrollment Period for returning citizens. A recently released person has 12 months to enroll for Part B without facing penalties, no matter his age.

For those currently incarcerated and un[not]enrolled, this means that they do not have to pay the Part B premium but can safely await release to sign up. Prisoners who have already enrolled and are paying the monthly premium[,] (or have a family member pay for them) can contact Medicare and disenroll from Part B, then simply re-enroll during the Special Enrollment Period after release. Unfortunately, there will be no reimbursement for the premiums already paid.

Returned citizens released prior to January 1, 2023 who have received a penalty on the Part B premium are stuck with it at this time. While Medicare can change its enrollment rules, the premium penalty is a statutory matter and requires Congress to change existing law.

Even though the changes do not apply retroactively, it is good that the unfair practice of forcing prisoners to pay health insurance premiums for services they cannot use is coming to an end. Readers who wish to contact Medicare can do so at 1-800-MEDICARE (633-4227).

/s/ J. Rodriguez, Activities

JOB ANNOUNCEMENTS



MHI Unit ADL/Peer Companion Position

We believe that AICs who have proven to be successful in the prison community can provide a valuable resource to peers within that community. By listening to and mentoring peers who are struggling with various disabilities, Peer Companions can help

teach them how to more effectively and productively manage their own responses to their environment.

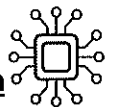
Mental Health Special Housing is now hiring for two, full-time ADL/Peer Companions on the Mental Health Infirmary (MHI) unit. The Individuals selected for this position will report to the MHI unit for their shifts. We are looking for motivated, responsible individuals who have the willingness to work with individuals unable to care for their own ADLs as well as individuals experiencing significant mental health symptoms. It is important for Unit Peer Companion candidates to behave in a manner that is respectful, safe, confidential, and honest; modeling patience, respectful communication, and the following of all unit and institution rules.

MHI Unit ADL/Peer Companions will have specific shifts and are responsible for assisting unit staff, QMHPs and treatment staff in ensuring that identified AICs housed on MHI are getting their basic and daily needs met, which helps to improve their functioning and improve their overall quality of life while incarcerated.

Duties may also include assisting individuals around ADL coaching and skill building; increasing social interactions; and guiding or accompanying individuals who have difficulty walking or who are resistant to engaging in activities outside of their cells to activities on the unit, during day room, or out for MHI yard time.

Please submit an application AIC communication to Katie Bell, MHI Program Manager, if you are interested. Applications will be accepted until this position is full. To be eligible, you must be an incentive Level 3 and have clear conduct for at least one year; it is preferred that you have one or more years left on your sentence.

/s/ K. Bell, BHS Program Manager



Physical Plant Electronics Shop Position

The Electronics Shop is accepting applications for AICs interested in a career as a low voltage electrician. This position will give someone an opportunity to go through an apprenticeship program, learn a trade, and earn a LEB Electrical license.

The desired candidate will embody this list of personal traits and meet the following criteria:

- Self-motivated with a desire to learn new skills and perfect their trade.
- Willingness to take and follow directions, constructive criticism, work well with others to accomplish tasks.
- Must be a team player who communicates well with all types of personalities.
- Reliable, maintaining regular attendance with a steady behavior.
- Willing to work off hours when necessary.

- Stay drug and alcohol free during your time here.
- Have at least one year clean conduct. Have a minimum of five years left on sentence. Must be Level 3 NCI.
- Have high school diploma/GED and ability to pass math test.
- Ability to work in confined spaces and lift at least 75 pounds.

Send applications with resume and cover letter to Palmer/Schaeffer Physical Plant Electronics Shop.

/s/ S. Palmer, Physical Plant



Paint Shop Crew Opening

Physical Plant is accepting applications in the Paint Shop for one position: Paint Crew (10 points)

The selected candidates will have the closest matching skills to those listed below.

Desired skills:

- Self-motivated individual with a desire to learn skills for the outside
- Willingness to take direction, criticism, and work with others to accomplish tasks
- Experience using hand tools, paint brushes, and rollers
- Able to lift 50-75 pounds frequently
- Reliable individuals who maintain regular attendance
- Ability to use spray equipment proficiently

Send a completed AIC job application to Physical Plant J. Trevino.

/s/ J. Trevino, Physical Plant



Paint Shop Apprentice Opening

Physical Plant is accepting applications in the Paint Shop for one position: Paint Apprenticeship Program (14 points)

The selected candidates will have the closest matching skills to those listed below. Application cutoff date is January 31, 2024.

Desired skills:

- Self-motivated individual with a desire to learn skills for the outside
- Willingness to take direction, criticism, and work with others to accomplish tasks
- Experience using hand tools, paint brushes, and rollers
- Able to lift 50-75 pounds frequently
- Reliable individuals who maintain regular attendance (limited call outs)
- Ability to use spray equipment proficiently

Requirements to enter the program:

- Clear Conduct 1 year minimum
- 4.5 to 7.5 years remaining before release date
- High School Diploma or Equivalent
- Regular assigned book work/testing (including math)
- 3-6 month trial period prior to indenturing into the program

Send a completed AIC job application with attached resume to Physical Plant J. Trevino. Incomplete applications will not be evaluated for an interview.

/s/ J. Trevino, Physical Plant



Physical Plant General Maintenance Opening

The Physical Plant General Maintenance Shop has an immediate opening for an AIC General/Campus Maintenance worker.

Interested applicants must be able to meet the following criteria:

- Be a self-starter.
- Have at least two (2) years clean conduct.
- Have at least one (1) year left here at OSP.
- Demonstrated ability to use hand tools (drills, roto hammer, Sawzall, tape measure, etc.)
- Ability to work using a lift.
- Ability to work in confined spaces.
- Ability to consistently lift at least 75 pounds.
- Ability to be redirected at a moment's notice to assist other shops or coworkers.

Please submit an AIC application form, resume, and cover letter to C. Hegeman, Physical Plant.

/s/ C. Hegeman, Physical Plant

RELIGIOUS SERVICES

OSP Buddhist Group Changes



The Buddhist group at OSP is undergoing changes. Gyoshi Mike Kaplan, who has led the group for several years, has stepped down, and Genko Sylvan Rainwater has stepped up. Genko is an ordained priest with Dharma Rain Zen Center, an organization that started the group and has led it for about 25 years.

Dharma Rain's purpose in doing Buddhist groups in prisons (we also have groups at Coffee Creek, Columbia River, Eastern Oregon, and Two Rivers) is to provide meditation instruction and practice, share Buddhist teachings, help create sangha (community) within the prison, and to foster inner peace and long-term personal transformation.

In this service, we step outside of our usual routine and all work together to create a space of stillness, silence,

safety, and self-discovery. The heart of it is Zen meditation, which looks like we're doing nothing, but in reality is an active, alert watching of body, mind, and heart. It is a rare opportunity to let go of outside stresses and focus on the silence and peace inside.

Genko is excited to work with this group, recognizing the depth of practice and experience among long-time members and hopeful that together we can continue to provide a place for continued personal growth for all interested.

/s/ OSP Religious Services

Weekly Chapel Schedule

Saturday, January 27

8:00 am LDS
Sweat Lodge
Jehovah's Witness
1:00 pm Jewish Service
Seventh Day Adventist
6:00 pm Calvary Chapel
Siddha Yoga (2nd and 4th Saturdays)

Sunday, January 28

8:00 am Spanish Protestant
Spanish Jehovah's Witness
Catholic Service
1:00 pm Urantia (1st and 3rd Sundays)
6:00 pm Lutheran Service

Monday, January 29

1:00 pm Hispanic Catholic Service
6:00 pm Pentecostal Service

Tuesday, January 30

1:00 pm Agape
Orthodox Christianity (1st and 3rd Tuesdays)
Art of Living (Meditate) (2nd and 4th Tuesdays)
6:00 pm Buddhist (1st and 3rd Tuesdays)

Wednesday, January 31

1:00 pm Justice Issues
6:00 pm Most Excellent Way Chapel

Thursday, February 1

1:00 pm TUMI
6:00 pm Gospel Service

Friday, February 2

1:00 pm Nation of Islam
Sunni Jumma Prayer

A Point to Ponder

"There is no normal life that is free of pain. It's the very wrestling with our problems that can be the impetus for our growth."

~ Fred Rogers





Financial Services

Informational Briefing

Savings Options for Adults in Custody

What is the Transitional Release Savings Account (TRSA)?

- Funds in the TRSA are protected from debt/obligation collection and garnishment.
- Established per SB844(2017)/ORS 423.105 as a means for AICs to save funds for release from ODOC custody.
- 5% of each eligible deposit is transferred into an AIC's TRSA until the account reaches \$500.
- AIC's may elect to transfer funds into their TRSA by submitting a Trust Account Transfer Request form (CD1832) up to \$500.
- AIC's may continue the 5% deduction of their eligible deposits beyond \$500 if court-ordered financial obligations (COFOs) are satisfied.
- Funds in the TRSA are not available to AICs until release from ODOC custody (*no exceptions*).

What is the General Savings Account (GS)?

- Funds in the GS Trust Account are not protected from debt/obligation collection or garnishment.
- Established as an optional means for AICs to save funds for release outside of the TRSA.
- AIC's may elect to transfer funds into the GS Trust Account once per calendar month by submitting a Trust Account Transfer Request Form (CD1832).
- Funds in this account are not available until the AIC releases from ODOC custody; an exception may be granted by the CFO or designee per OAR 291 Div. 158.

What About External Savings Accounts?

AIC's may have accounts with external banking institutions however, ODOC staff are not able to facilitate. AIC's may not have unauthorized money items in their possession (such as checks).

Note: Trust Account Transfer Request Forms (CD1832) are available on AIC housing units or through Business Services. If the amount being transferred is excessive, it will be limited. The minimum transfer amount is \$5.00.

Please address any questions to Business Services by submitting an AIC communication (available electronically on the tablet).

Questions?

AICs may submit an AIC Communication form to Business Services (electronic communication option preferred & available on the tablet). Friends and Family may submit questions to dldoctrustinfo@doc.state.or.us.



Mainline

Week at a Glance

Week	Monday 1/29/2024	Tuesday 1/30/2024	Wednesday 1/31/2024	Thursday 2/1/2024	Friday 2/2/2024	Saturday 2/3/2024	Sunday 2/4/2024
Week 3	BREAKFAST Oatmeal - 1.00 CP Canned Fruit - 0.50 CP Hard Boiled Egg (Sta,Chl) - 1.00 EA Pancakes (Sod,Chl) - 3.00 EA Maple Syrup - 2.00 FLOZ Margarine (Sta) - 1.00 TBS Skim Milk - 16.00 FLOZ Coffee - 8.00 FLOZ Sugar PC - 2.00 EA	Dry Cereal - 1.00 CP Fresh Fruit - 1.00 EA Veggie & Cheese Scramble (Chl,Sfa) - 0.75 CP Wheat Toast - 2.00 SLC Margarine (Sta) - 1.00 TBS Skim Milk - 16.00 FLOZ Coffee - 8.00 FLOZ Sugar PC - 2.00 EA	Farina - 1.00 CP Canned Fruit - 0.50 CP Scrambled Eggs (Sta,Chl) - 0.50 CP Shredded Cheese (Sta,Chl) - 2.00 TBS Fried Potatoes - 0.75 CP Skim Milk - 16.00 FLOZ Coffee - 8.00 FLOZ Sugar PC - 2.00 EA	Dry Cereal - 1.00 CP Fresh Fruit - 1.00 EA Poultry Sausage (Chl) - 1.00 EA French Toast (Chl) - 2.00 SLC Maple Syrup - 2.00 FLOZ Margarine (Sta) - 1.00 TBS Skim Milk - 16.00 FLOZ Coffee - 8.00 FLOZ Sugar PC - 2.00 EA	Oatmeal - 1.00 CP Canned Fruit - 0.50 CP Fried Egg (Sta,Chl) - 1.00 EA Sliced Cheese (Sta,Chl) - 1.00 SLC English Muffin (Sta,Chl) - 1.00 EA Fried Potatoes - 0.75 CP Margarine (Sta) - 1.00 TBS Skim Milk - 16.00 FLOZ Coffee - 8.00 FLOZ Sugar PC - 2.00 EA	Canned Fruit - 0.50 CP Scrambled Eggs (Sta,Chl) - 0.33 CP Poultry Sausage (Chl) - 1.00 EA Fried Potatoes - 0.75 CP Wheat Toast - 2.00 SLC Jelly - 2.00 TBS Margarine (Sta) - 1.00 TBS Skim Milk - 16.00 FLOZ Coffee - 8.00 FLOZ Sugar PC - 2.00 EA	Multigrain Hot Cereal - 1.00 CP Fresh Fruit - 1.00 EA Hard Boiled Egg (Sta,Chl) - 1.00 EA Breakfast Pastry (Sta,Chl) - 1.00 EA Skim Milk - 16.00 FLOZ Coffee - 8.00 FLOZ Sugar PC - 2.00 EA
Week 3	LUNCH Asian Cabbage Salad - 0.75 CP Sweet & Sour Chicken (Chl) - 0.75 CP Brown Rice - 0.75 CP Stir-Fry Vegetables - 0.75 CP Japanese Milk Roll - 1.00 EA Fresh Fruit - 1.00 EA Fortified Fruit Drink - 8.00 FLOZ	*Soup of the Day (Sod,Chl) - 10.00 FLOZ *Meat & Cheese Sandwich on Wheat (Sod,Chl,Sfa) - 1.00 EA Wheat (Sod,Chl,Sfa) - 1.00 EA Sliced Onions - 2.00 TBS Shredded Lettuce - 0.25 CP Mayo & Mustard (Sod) - 2.00 TBS Peas - 0.75 CP Chips - 1.00 BAG Fresh Fruit - 1.00 EA Fortified Fruit Drink - 8.00 FLOZ	Bean Soup - 10.00 FLOZ Hot Turkey Sandwich on Wheat (Chl) - 1.00 SV Mashed Potatoes - 0.75 CP Poultry Gravy - 2.00 FLOZ Carrots - 0.75 CP Fresh Fruit - 1.00 EA Fortified Fruit Drink - 8.00 FLOZ	Corn Chowder (Sod) - 10.00 FLOZ Chicken-Lettuce Salad (Chl) - 1.00 SV Sliced Onions - 2.00 TBS Shredded Cheese (Sta,Chl) - 2.00 TBS Salsa Dressing (Sta,Sod) - 2.00 FLOZ Broccoli - 0.75 CP Wheat Dinner Roll - 1.00 EA Fresh Fruit - 1.00 EA Fortified Fruit Drink - 8.00 FLOZ	*Soup of the Day (Sod,Chl) - 10.00 FLOZ Tuna Melt Sandwich on Wheat (Sod,Chl,Sfa) - 1.00 EA Potato Salad (Sta,Chl) - 0.75 CP Peas & Carrots - 0.75 CP Fresh Fruit - 1.00 EA Fortified Fruit Drink - 8.00 FLOZ	Texas Slaw - 0.75 CP Chicken Fajita Mix (Chl) - 0.50 CP Onions & Bell Peppers - 0.50 CP Lemon Cilantro Rice - 0.75 CP Wheat Tortillas (Sta,Sod) - 2.00 EA Salsa (Sod) - 0.25 CP Fresh Fruit - 1.00 EA Fortified Fruit Drink - 8.00 FLOZ	Lettuce Salad - 1.00 CP Salad Dressing - 1.00 FLOZ Chicken Quarter (Chl,Sfa) - 1.00 EA Mashed Potatoes - 0.75 CP Poultry Gravy - 2.00 FLOZ Peas - 0.75 CP Wheat Dinner Roll - 1.00 EA Margarine (Sta) - 1.00 TBS Ice Cream Cup - 1.00 EA Fortified Fruit Drink - 8.00 FLOZ
Week 3	DINNER Lettuce Salad - 1.00 CP Salad Dressing - 1.00 FLOZ Beef Stroganoff (Chl,Sfa) - 0.75 CP Pasta - 0.75 CP Broccoli - 0.75 CP Wheat Bread - 2.00 SLC Margarine (Sta) - 1.00 TBS Tea - 8.00 FLOZ	Lettuce Salad - 1.00 CP Salad Dressing - 1.00 FLOZ Chicken & White Bean Chili (Chl) - 10.00 FLOZ Shredded Cheese (Sta,Chl) - 2.00 TBS Brown Rice - 0.75 CP Green Beans - 0.75 CP Cornbread (Sod,Chl) - 1.00 EA Margarine (Sta) - 1.00 TBS Choice Cookie (Sta,Chl) - 1.00 EA Tea - 8.00 FLOZ	Canned Fruit - 0.50 CP *Pork Ham (Sod,Chl) - 2.00 OZCKD Fried Egg (Sta,Chl) - 2.00 EA O'Brien Potatoes - 0.75 CP Biscuit (Sta,Sod) - 1.00 EA Margarine (Sta) - 1.00 TBS Coffee - 8.00 FLOZ	Lettuce Salad - 1.00 CP Salad Dressing - 1.00 FLOZ *Pizza (choice) (Sod,Chl,Sfa) - 1.00 EA Blended Vegetables - 0.75 CP Choice Dessert (Sta,Chl) - 1.00 EA Tea - 8.00 FLOZ	Lettuce Salad - 1.00 CP Salad Dressing - 1.00 FLOZ Turkey A La King (Sod,Chl) - 0.75 CP Brown Rice - 0.75 CP Green Beans - 0.75 CP French Bread - 1.00 SLC Margarine (Sta) - 1.00 TBS Bread Pudding (Sod,Chl) - 0.50 CP Tea - 8.00 FLOZ	Lettuce Salad - 1.00 CP Salad Dressing - 1.00 FLOZ Beef Patty (Chl,Sfa) - 1.00 EA Sliced Cheese (Sta,Chl) - 1.00 SLC Wheat Burger Bun (Sta,Chl) - 1.00 EA Blended Vegetables - 0.75 CP Seasoned Potatoes - 0.75 CP Ketchup (Sod) - 2.00 TBS Tea - 8.00 FLOZ	Lettuce Salad - 1.00 CP Salad Dressing (Sod) - 1.00 FLOZ Macaroni & Cheese (Sod,Chl,Sfa) - 1.25 CP Carrots - 0.75 CP Wheat Bread - 2.00 SLC Margarine (Sta) - 1.00 TBS Fresh Fruit - 1.00 EA Tea - 8.00 FLOZ

Menu subject to change without notice. Meat-Alternative-Trays available at lunch & dinner only.

*Contains or may contain pork.

Sod = High Sodium Sfa = High Saturated Fat Chl = High Cholesterol Sug = High Sugar

© Powered By: Culinary Suite

08/24/2023, 11:36 AM